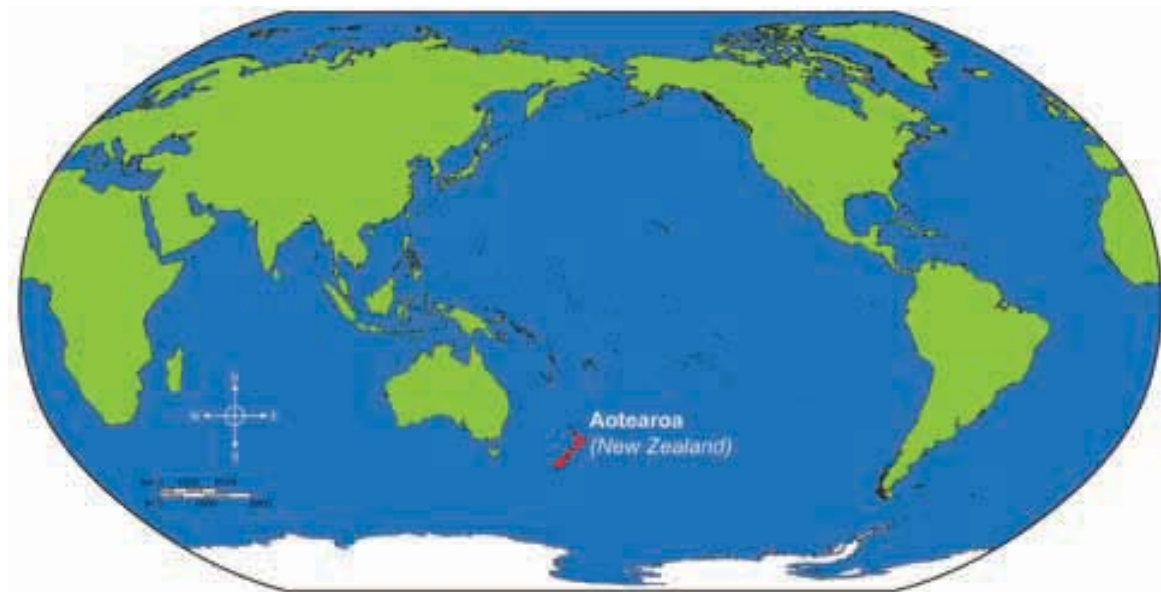


Libraries Supporting the Rebuild of Christchurch

International Papers
Session
ALA Conference
Anaheim, California
23 June 2012



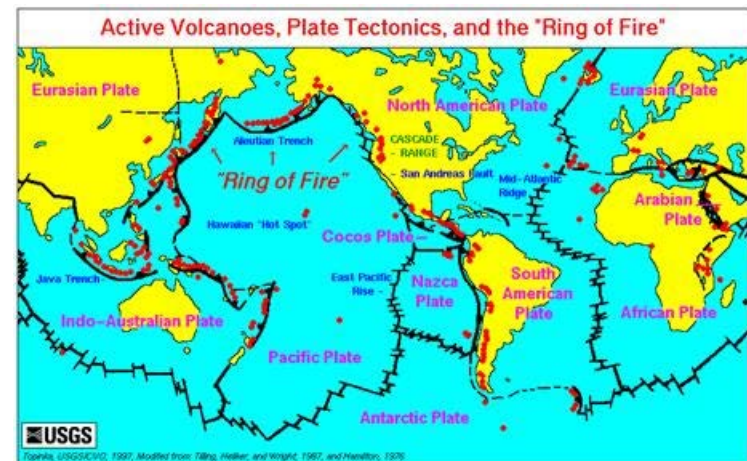


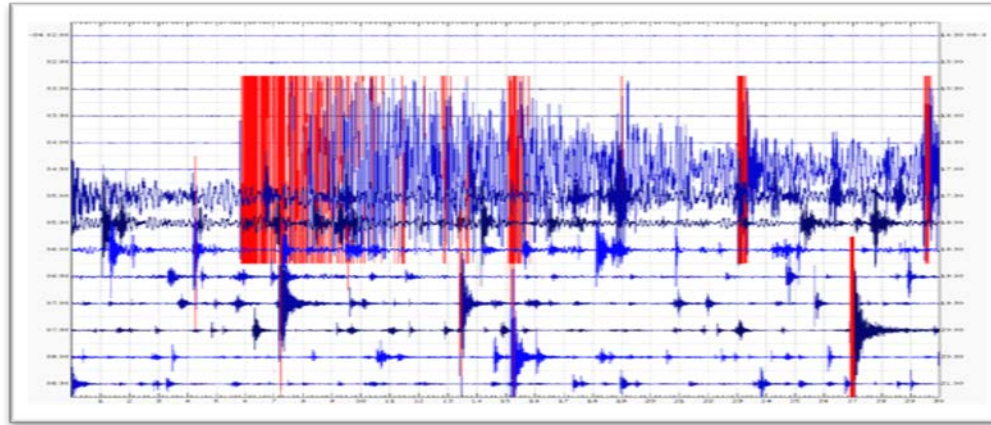
Greetings thrice times to you all,
I am from Christchurch New Zealand,
My mountain is Aoraki/Mount Cook,
My river is Ōpāwaho /Heathcote,
My name is Carol Brandenburg,
My greetings to you all, and to us all
here gathered



Greeting to you,
I am from Christchurch New Zealand,
My mountain is Opuke/Mount Hutt,
My river is the Rakaia,
My name is Carolyn Robertson,
My greetings to you all, and to us all
here gathered







Date	Time	Magnitude
------	------	-----------

4 September 2010	4.35am	7.1
------------------	--------	-----

22 February 2011	12.51pm	6.3
------------------	---------	-----

13 June 2011	2.20pm	6.3
--------------	--------	-----

23 Dec 2011	1.58 & 3.18pm	5.8 & 6.0
-------------	---------------	-----------

+ 10,000 aftershocks ...and still counting

With the latest being a 4.2 on 12 June

In remembrance

New Zealanders mourn
the 185 lives lost
on 22 February 2011





At the heart of the city: Christchurch Cathedral

Before



After





Grand Chancellor Hotel



Provincial Chambers



Iconic Carlton Hotel





Rapanui

“Shag Rock now Shag Pile”





Major road damage



Generous neighbours



Minor liquefaction,
1 foot deep x
6 feet square





Library damage









Damage to Taonga





Libraries supporting staff

Christchurch City Library colleague: Bev's home





Re-shelving teams at Lincoln University

including ex-staff and staff from Christchurch Polytechnic Library





Library service changes and responses

Rehua Marae 2011









Opportunities from adversity

Papanui Branch

Archie, the kiosk for children





Homework centre based in new “mini” library





Social media

facebook 

Search 

Christchurch City Libraries
Ngā Kete Wānanga-o-Ōtautahi

Wall
Info
Events
Photos
Flickr

About
19 libraries, a mobile library service,
a host of digital library services,...
[More](#)

1,307
like this

Likes [See All](#)
 **Auckland Writers & Readers Festival**
 **Christchurch Cultural Hub**
 **Canterbury Earthquake Recovery**

Christchurch City Libraries 
Library · Christchurch, New Zealand



Wall Christchurch City Libraries · **Everyone (Top Posts)** ▼

Christchurch City Libraries
Welcome back. <http://ow.ly/6hh0Z> MO

 **Welcome - Canterbury Museum - New Zealand Natural and Human Heritage....**
ow.ly

 58 minutes ago via HootSuite · [Share](#)

 2 people like this.

Christchurch City Libraries
Have your say on the Draft Central Christchurch Plan - Light rail? Seven storey buildings? Cycleways? Markets? Schoo... <http://ow.ly/1euJ1W>


 **Have your say on the Draft Central Christchurch Plan**
ow.ly
Light rail? Seven storey buildings? Cycleways? Markets? School choice? What does it all mean for our beautiful city? What are your thoughts on all...

 15 hours ago via HootSuite · [Share](#)



Kete Christchurch

<http://ketechristchurch.peoplesnetworknz.info>

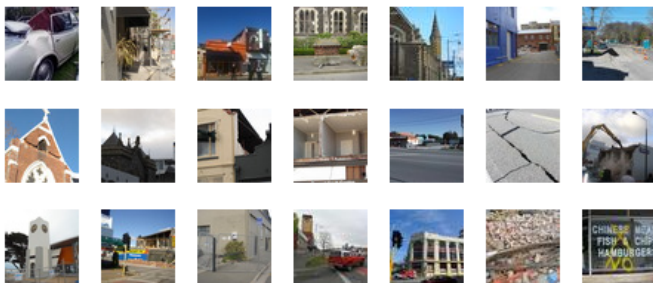


Kete Christchurch : Canterbury Earthquakes 2010 2011
In Memoriam | Places and Streets | more...

Home | Browse: Site or Canterbury Earthquakes 2010 2011 | About | Help | Contact | Add Item | Register | Login

We want to collect and preserve your Canterbury earthquake stories and pictures.

And what happened next, and how some things have changed and some have remained the same.



Register on Kete, and add your stories, photos, memories of the earthquake and the aftermath.

If you have a lot of images we can bulk upload these for you if you want and then you can add your stories later.
Contact us at ketechristchurch@ccc.govt.nz

Material in this basket will be collated into an archive of the Christchurch City Libraries documenting the experiences of our community, during the Earthquake and the rebuilding of our city.

Welcome to our basket for collecting material about the Canterbury earthquake on September 4, 2010, the following aftershocks, the Boxing Day event and the earthquake on the February 22, 2011.

A 7.1 magnitude earthquake - centred 40km west of Christchurch and with its epicentre 10km south-east of Darfield - occurred on Saturday 4 September 2010 (NZ time). Widespread damage occurred, with disruption to water, power and sewerage services.

February 22, 2011, was a smaller magnitude but because of its epicenter had a much larger impact on Christchurch including loss of life.

This basket has open membership.
[Register](#) on Kete, and automatically join this basket.

Add your stories, photos, memories of



CEISMIC

<http://www.ceismic.org.nz/>



Te Rūnanga o Ngāi Tahu Megacom



Library lessons learned

Graham,
Lincoln University,
Library Teaching and
Learning



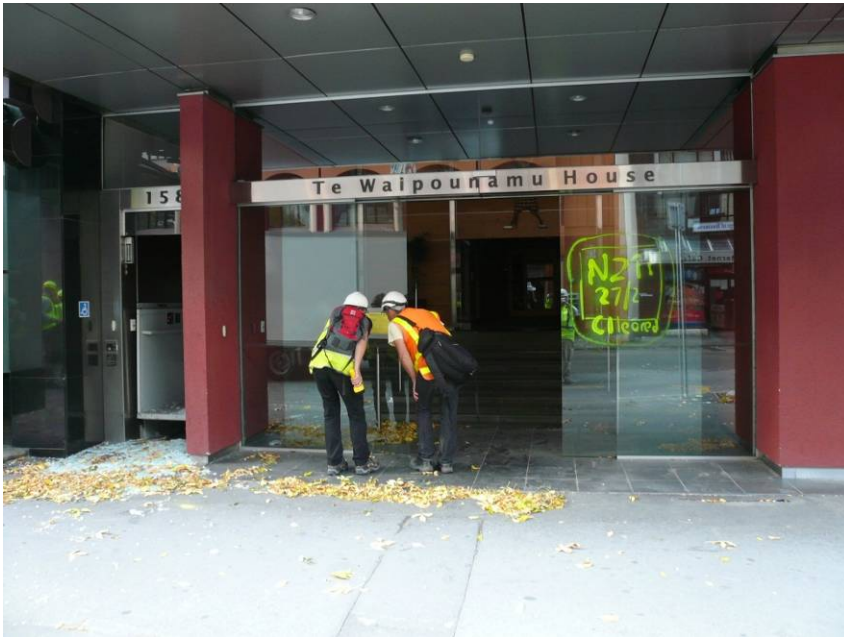


Robyn,
Christchurch City Libraries,
directing trucks removing
rubble



Te Waipounamu House Te Rūnanga o Ngāi Tahu

Engineers checking building
rating notice on doorway





Some of our colleagues





*Unuhia te rito o te harakeke kei whea te kōmako e kō?
Whakatairangitia – rere ki uta, rere ki tai;
Ui mai koe ki ahau he aha te mea nui o te ao,
Māku e kī atu he tangata, he tangata, he tangata!*

Remove the heart of the flax bush and where will the kōmako sing?
Proclaim it to the land, proclaim it to the sea;
Ask me, 'What is the greatest thing in the world?'
I will reply, 'It is people, people, people!'



New Zealand's specialist land-based university





Community response

Re:Start Container Mall





Lincoln University Graduation Ceremony 2011

“Gap Filler” book exchange





Some community projects “Greening the rubble”





Road cone art

New Central Library Peterborough





Aurelia.Arona@ccc.govt.nz

Haneta.Pierce@ccc.govt.nz

**Christchurch City Libraries,
Māori Services Team**

<http://christchurchcitylibraries.com/Maori/>

Terrisa.Goldsmith@ccc.govt.nz

Christchurch City Libraries

<http://christchurchcitylibraries.com/>

Tania.Nutira@ngaitahu.iwi.nz

Te Rūnanga o Ngāi Tahu

<http://www.ngaitahu.iwi.nz>



Te Rūnanga o NGĀI TAHU



New Zealand's specialist land-based university





Contact details

Carol Brandenburg

Carol.Brandenburg@lincoln.ac.nz

**Lincoln University, Library,
Teaching and Learning**

<http://library.lincoln.ac.nz/>

Te Rōpū Whakahau

Te Waipounamu representative

<http://www.trw.org.nz/>

Carolyn Robertson

Carolyn.Robertson@ccc.govt.nz

Christchurch City Libraries

<http://christchurchcitylibraries.com/>