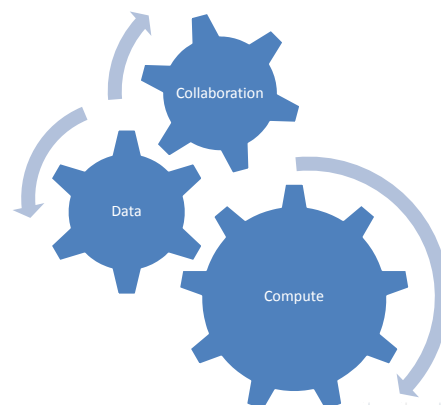
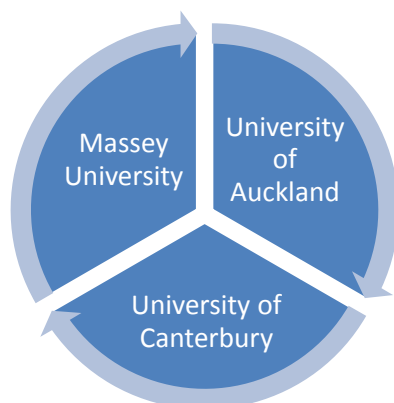


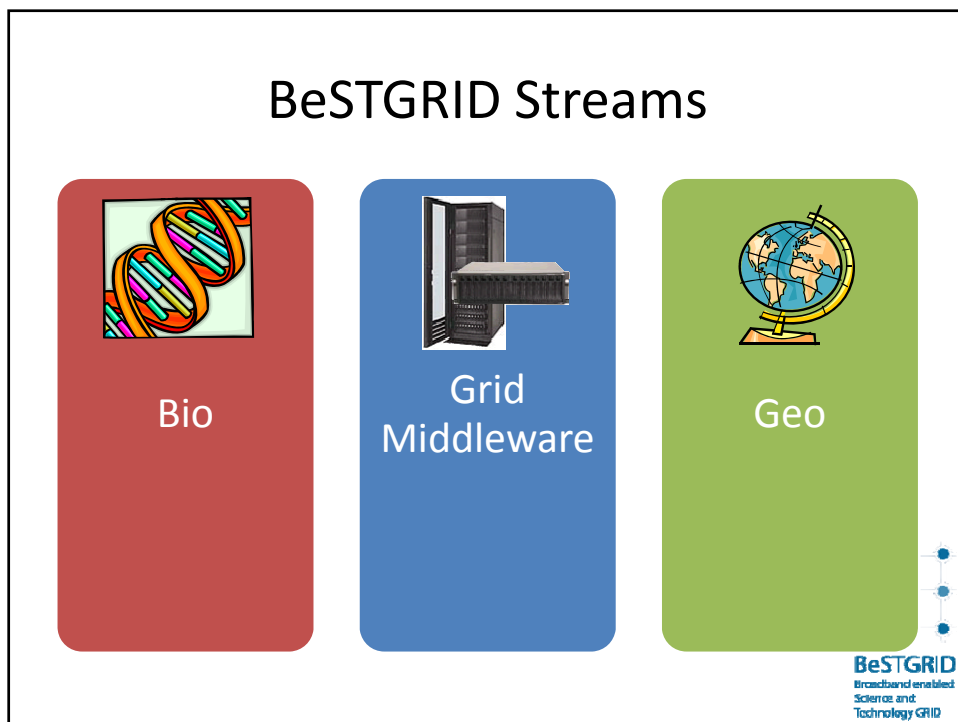
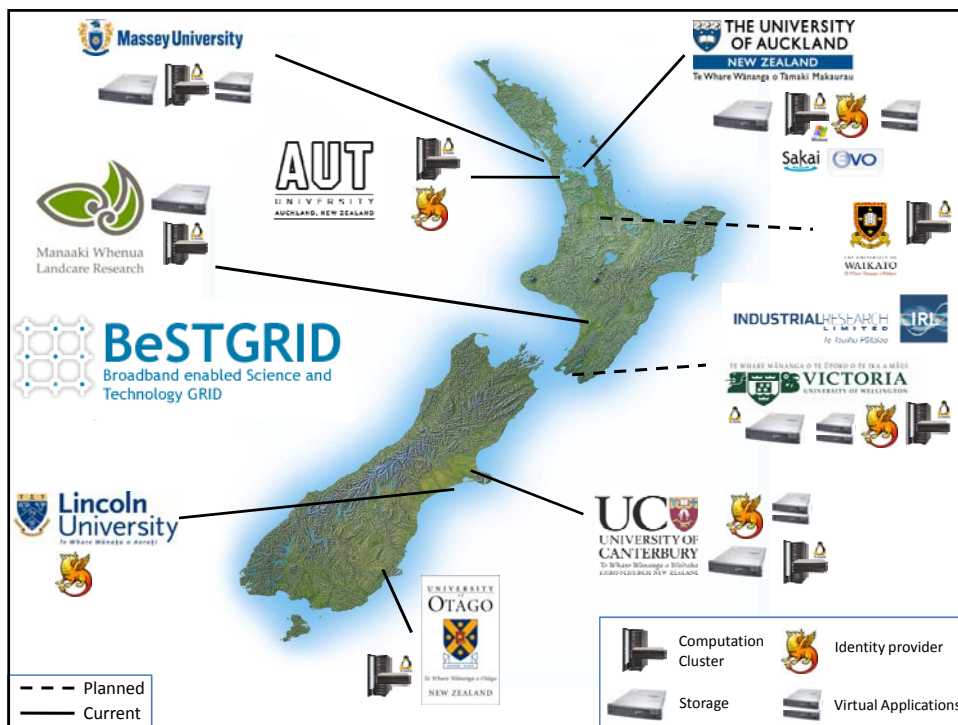
Bringing Users into BeSTGRID – From Technology to People

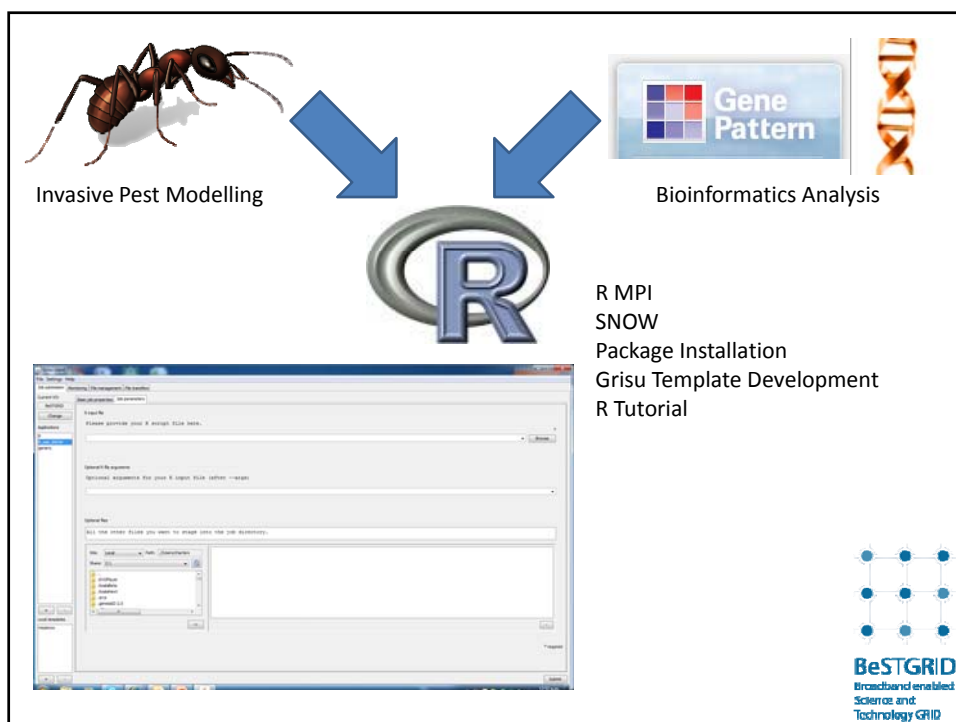
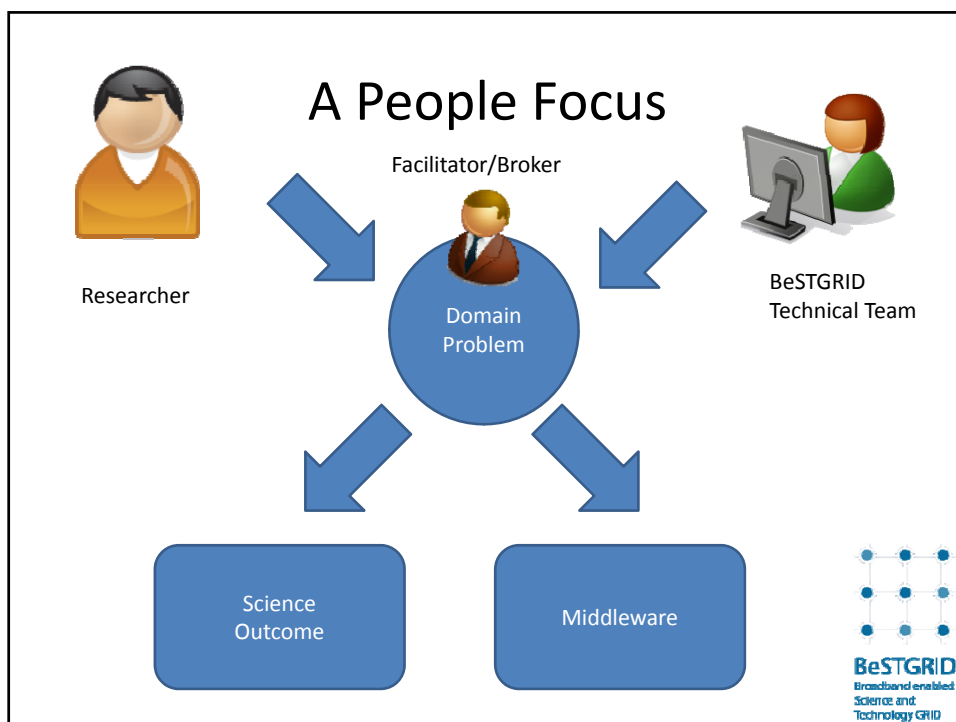
Stuart Charters

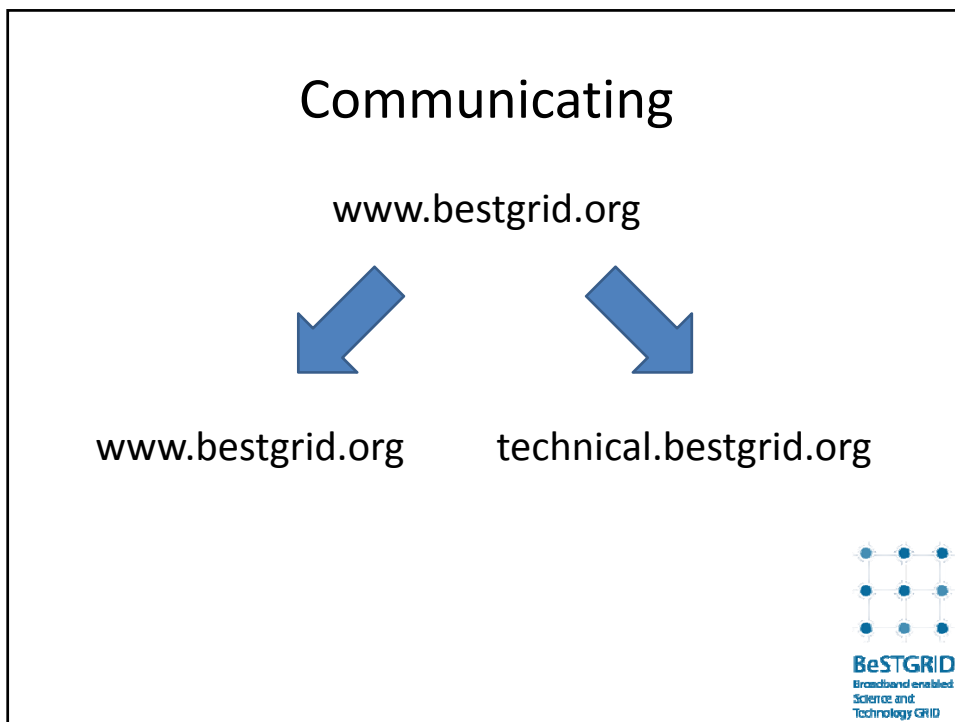


In the beginning









Quick Start Guides

Quick Launch Area

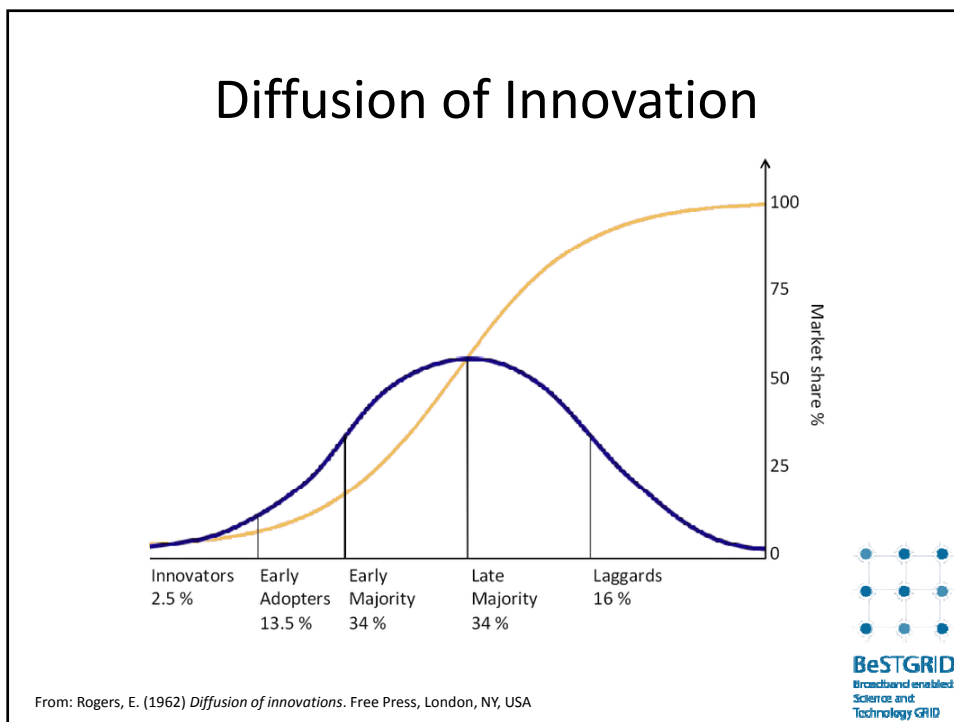
Case Studies

The screenshot shows the BeSTGRID website interface. At the top left, there is a search bar and a navigation menu. A black arrow points from the text 'Quick Start Guides' to the 'Get Started' link in the navigation menu. Another black arrow points from 'Quick Launch Area' to the 'Quick Launch' section on the right side of the page. A third black arrow points from 'Case Studies' to a section in the main content area. The website header includes the BeSTGRID logo and the text 'Broadband enabled Science and Technology GRID'. The main content area features several news items and links, including 'eResearch Symposium 2010, 26-27 October, Auckland' and 'Summer of eResearch 2010'. The footer contains the text 'Supported by the Ministry of Research, Science & Technology eResearch programme and our Members.' and a 'Login' link.

The screenshot shows a web browser displaying an article on the BeSTGRID website. The article title is "Setting up a GUMS server". The page content includes a description of GUMS (Grid User Management System) as an authorization server, followed by a list of four points: 1. distinguished name (DN) in the certificate, 2. VO information in the certificate, 3. local server configuration, and 4. current group membership from the VOMS server. It also lists advantages of using GUMS, such as centralized configuration and up-to-date information. A table of contents is visible at the bottom of the article content.

Contents [hide]

- 1 Preliminaries
 - 1.1 OS requirements
 - 1.2 Network requirements
 - 1.3 Certificates
- 2 GUMS install
 - 2.1 Clean CentOS install
 - 2.2 Check Firewall



Summary

- BeSTGRID initial focus on technology deployment
- Change in focus once technology stable to involve users & user experience
- Adapted work processes & communication methods
- Still growing, still refining, engaging with broader communities of users

