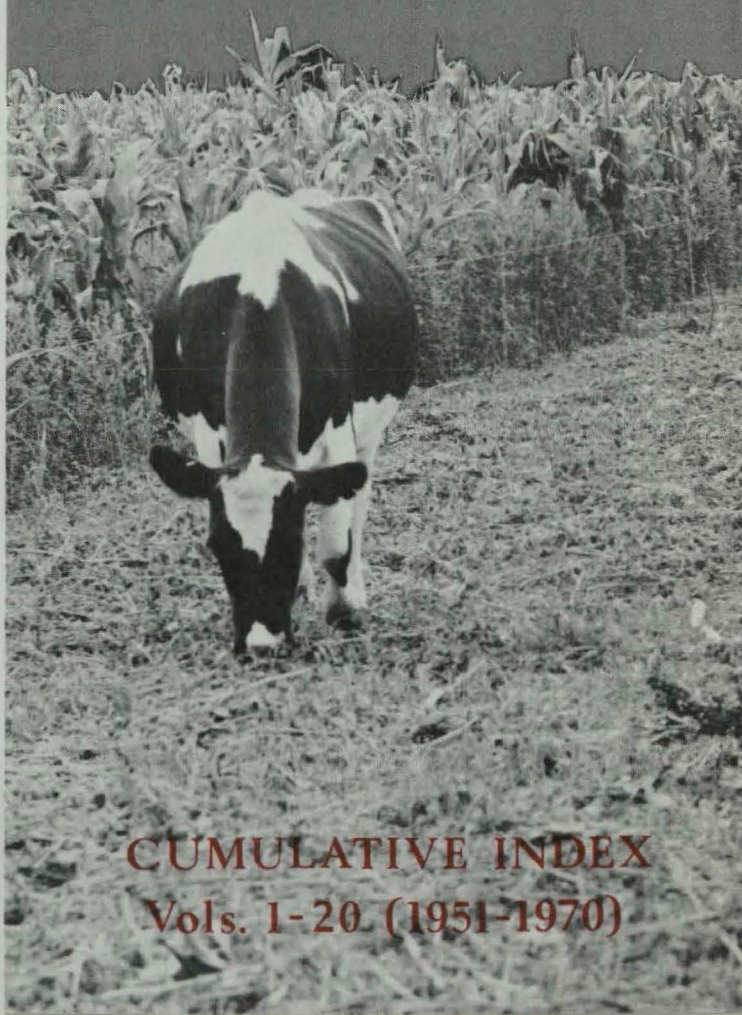




PROCEEDINGS of FARMERS' CONFERENCE

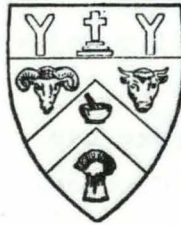
LINCOLN COLLEGE

UNIVERSITY COLLEGE OF
AGRICULTURE



CUMULATIVE INDEX
Vols. 1-20 (1951-1970)

LINCOLN COLLEGE
UNIVERSITY COLLEGE OF AGRICULTURE



PROCEEDINGS
of
LINCOLN COLLEGE
FARMERS' CONFERENCE

CUMULATIVE INDEX

Vols. 1-20 (1951-1970)

1971

This cumulative index has been prepared for farmers, students and others who may wish to make use of earlier volumes of the published Proceedings.

References are to the volume number and the page numbers of each paper listed.

It was compiled by Miss F. L'Estrange of the staff of the College Library, and typed in its final form by Miss P. Blake of the Department of Rural Education.

Stocks of some earlier volumes of the Proceedings are still held. While these last, copies may be purchased on application to:

The Secretary,
Lincoln College Farmers'
Conference,
Lincoln College,
Canterbury.

AUTHOR INDEX

A

ACLAND, J. Farmer's experiences with beef cattle	7: 44-49
ACLAND, J.O. A critical look at the place of beef cattle on hill country	17: 93-96
ADAM, J.L. Grain feeding of the sow	18:139-144
Sources of profit and loss with meal fed pigs	17:159-162
ADAMS, A.F.R. Soil testing for major and trace elements	4: 34-45
ALDERTON, D. Footrot eradication	4: 18-28
ALDRIDGE, G. Streamlining dairy farming	14:131-136
ANDREWS, E.D. Selenium responsive diseases	17:119-124
ARMSTRONG, M.C. Stock health: Progress report on white-muscle disease and ill thrift	9: 65-68
ASKIN, G.T. The production of wool: C. Corriedale	5: 33-36

B

BAKER, A.B. Policy of the N.Z. Meat Producers' Board on beef production in the South Island	7: 14-18
BAKER, D.G. Meat production on the farm	11: 34-39
BAKER, G. Mechanisation and use of silage on a South Canterbury farm	2: 89-94
BAKER, J. Economic pointers to grain-feeding pigs in New Zealand	18:134-138
BALLINGER, R. Export potentiality of seeds	18: 60-66
BARCLAY, P.C. Progress in the development of new pasture species and varieties	14: 29-33
BARGH, C.V. The establishment of a 700-cow dairy farm	18: 17-20
BARTON, H.M. Soil testing from a farmer's viewpoint	4: 45-48
BARTON, R.A. Aims of beef cattle selection and methods of achieving these aims	14: 72-78
BATTERSBY, G.B. The monetary and economic council's view of the economy	18:117-121
BAUMGART, I.L. Development of research for agriculture	16: 6-11
BERRY, E.C. Westland farming: The development of a sheep farm	13: 32-36
BETHELL, C.H. The production of wool: C. Corriedale	5: 28-33
BEVIN, R.H. Farm labour in New Zealand	3: 67-77
BLAIR, I.D. Avoidable hazards in the growing of wheat	9:111-114
Turnip mosaic	8:121-128
BOTTING, D.J. Facing up to the financial problems of dairy farm development	17:139-144
BOWMAR, S.C. Fodder crops and their utilisation	2: 94-99
BOYD-CLARK, J. The wool trade	5: 11-13
BRANDENBURG, W. Processing crops with a future in Canterbury	19: 86-90
BROADHEAD, B.G. A survey of farm labour in Springs County	3: 83-87
BROOKBANKS, E.O. Observations on a mastitis survey in the Waikato	14:144-149
BRUERE, A.N. Stock health: Progress report on white-muscle disease and ill thrift	9: 58-63
BRUNSDON, R.V. A new look at drenching	17:104-118
BUDGE, M.B. Vaccination of lamb against infectious epididymitis	8:166-170
BULLEID, J.B. Spray irrigation in North Otago	3: 64-66
BURDON, G. The management of high country	10: 71-77
BUTLER, G.W. Pasture composition and its relation to animal thrift	8:135-141
Some aspects of chemical composition (of plants) in relation to animal health	11: 96-104

C

CALDER, J.W. Developments in British farming	14:123-130
Lucerne-grass-clover mixtures	5: 58-61
Pasture research at Ashley Dene	6: 54-59

CALLAGHAN, P.R.	The New Zealand Wool Board research plans and results to date	8: 26-35
CAMERON, B.K.	Intensification on light land in Canterbury	20: 84-90
CAMERON, L.A.	Meat marketing symposium	12: 12-24
CAMPBELL, I.L.	Overseas research in milk production	12: 73-78
CAMPBELL, S.J.B.	Increasing production on a South Canterbury downlands mixed farm	15: 48-54
CANDLER, W.V.	Incentives for increased output of farm products	14: 10-19
CANDY, R.A.	Beef from the dairy herd The farm of the future	17: 145-151 20: 29-34
CANT, R.G.	The labour position on the farm	17: 55-61
CARR, H.M.	Soil testing from a farmer's viewpoint	4: 48-50
CARTER, A.H.	The potential for increased farm efficiency from exotic breeds of sheep and cattle	20: 108-123
CASELBERG, H.M.	How to get into farming	16: 88-93
CASTLE, L.	The politics and economics of New Zealand trade	13: 6-13
CHALLENGER, S.	Labour-saving gardens The making and maintenance of a beautiful landscape	12: 120-124 19: 105-112
CHAPMAN, L.P.	Some aspects of tussock country management	4: 77-84
CHISHOLM, M.M.	The production and management of beef cattle on Molesworth for the store market	10: 95-102
CLARK, J.	The production of wool: D. Fat lamb flock	5: 36-40
CLARK, R.W.	High stocking rates can be achieved in the South Island	17: 133-138
CLARKE, E.A.	Progress in flock recording Some recent developments in sheep management on North Island hill country	18: 25-32 9: 17-24
CLELAND, G.R.	Farming trends in America	19: 129-138
CLIFFORD, H.J.	A revolution in dairy farming Some methods of avoiding treading damage to pastures	16: 28-34 13: 82-87
COCKS, J.R.	Irrigation for intensifying mixed crop farming	18: 77-85
COLLINS, B.W.	Underground water supplies for irrigation	6: 70-85
CONNOR, H.E.	Some aspects of the botany of tussock grasslands	10: 78-82
COONEY, E.A.	Farm forestry: Utilisation and financial returns	11: 119-127
COOP, I.E.	Experiments on sheep fertility at Lincoln College Face cover in sheep Fat-lamb sires Nutritional aspects of fodder conservation Seasonal productivity and stock feed requirements Synchronized lambing	12: 49-53 6: 42-47 1: 49-56 10: 127-131 2: 82-89 15: 60-65
COPLAND, H.M.	Dry land farming and the feed supply Farming overseas	2: 105-109 6: 105-107
COPP, L.G.L.	Wheat varieties Wheat varieties	9: 108-110 13: 97-101
CORKILL, L.	Pasture-plant improvement	8: 129-134
CORNWELL, J.	New Zealand farming in the 1970's and the Common Market	20: 6-16
COWIN, P.J.	Breeds for hill-country: B. Cheviot	1: 27-32
CRAN, C.G.	The production of wool: B. Halfbred	5: 26-28
CRAWFORD, J.M.	Stock firm credit and farm budgets	17: 41-45
CRAWFORD, R.	The fertility of ewes and rams with special reference to diseases affecting their fertility	3: 108-117
CROSBIE, C.J.	Bulk handling and storage of grain Bulk harvesting storage and drying Work study and mechanisation	9: 128-136 13: 110-119 17: 68-74
CROTHALL, E.A.	Problems in a growing business and their solution	18: 21-24
CRUMP, D.K.	High-country development	20: 130-133
CUNNINGHAM, I.J.	Recent knowledge of trace elements and animal health	8: 158-165

D

DANKS, A.J.	Wheat and arable farming: (1) International aspects	2: 20-24
DAVENPORT, P.G.	Disease prevention in the pigery	18: 125-127

DAVIES, J.D.G. Canterbury dairy farm pasture species: their management and renovation	15: 115-121
DAWSON, A.R. The development of two fat-lamb farms	3: 117-126
DAWSON, M.D. The processed vegetable industry in Oregon and its relevance to New Zealand	18: 111-116
DEANS, D. Farm shelter	4: 59-61
DILLON, P.L. Dry land farming and the feed supply	2: 99-105
DINGWALL, A.R. Weed control of South Island hill country	4: 84-93
DOYLE, H. External parasites of sheep	11: 52-54
DRAKE, C. Recent advances in selenium and animal health	10: 29-32
Stock health: Progress report on white-muscle disease and ill thrift	9: 79-80
DRIVER, C.M. Possibilities and problems in growing potatoes for processing	19: 91-98
DUNCAN, J.E. Moisture in wool	8: 47-59
DUNCAN, J.R. Experiences with a feeding shed	13: 88-91
DUNKIN, A.C. The relative values of fishmeal and meatmeal for growing pigs	18: 131-133
DUNLOP, W.N. Reasons for the rules governing the Coopworth	19: 63-66
DUNN, J.S. Seed bed mechanisation for efficient crop production	19: 126-128
DUNSHEA, L.C. Wheat and arable farming: (2) N.Z. production, requirements and marketing	2: 25-28

E

EDMOND, D.B. Animal treading and pastures	13: 77-81
ENSOR, P.C. Breeds for hill country: A. Corriedale	1: 21-27
Options open to high-country farmers	20: 124-129
EVANS, H.R. Bulk handling and storage of grain	9: 136-138
EVERITT, G.C. Recent developments in beef production	17: 84-92

F

FAIRHALL, J.E. Irrigation: farmer's experiences	6: 99-104
FAITHFUL, W. The management of high-fertility farms	10: 116-126
FALCONER, P.M. Beef cattle on Canterbury plainsland farms	11: 40-49
FAWCETT, E.J. Population: potential production and marketing prospects	6: 8-17
FERGUSON, G.K. Westland farming: The development of a run	13: 27-32
FIELDEN, E.D. Increasing the annual calf crop	10: 103-109
FILMER, J.F. Control of foot-rot in sheep	4: 14-18
Recent developments in the control of diseases of sheep	1: 67-75
FIPFARD, N.B. Some thoughts on providing taxation and duties to ensure continuity of farming	10: 158-165
FITZHARRIS, J. State land development and the land settlement policy	20: 66-71
FLAY, A.H. Budgeting for the farmer	10: 154-157
Cropping and its effect on soil fertility	2: 7-16
Lucerne in the farm programme	5: 70-72
Nassella tussock (panel discussion)	13: 62-76
Potential production of light plains land	6: 60-62
Sources of credit (panel discussion)	12: 96-111
FOUGERE, G.S. Development of a Southland farm	12: 118-119
FRASER, J.D. The final report of the wool marketing study group	18: 45-51
Taxation incentives	15: 23-28
FRENGLEY, G.A.G. Dairy specialisation versus diversification	17: 152-158
Out of season shearing with reference to farm management	14: 50-56

G

GARRETT, H.E. Bulk harvesting (panel discussion)	13: 123-127
Forage crops and farm management	8: 77-84
Lambing percentages on light land	12: 68-72
Planning the feeding programme	2: 109-111

GERRARD, I.A.	Irrigation: farmer's experiences	6: 92-94
GERRING, J.C.	Producing beef from dairy herds	13: 92-96
GILLANDERS, B.R.	Experiences with bulk harvesting and storage	13:120-122
GRANT, A.B.	Recent advances in selenium and animal health	10: 29-32
	Stock health: Progress report on white-muscle disease and ill thrift	9: 79-80
GRAYBURN, A.W.	Farm forestry: Species for various sites and purposes	11:110-118
GREEN, W.A.E.	Linking livestock numbers to living standards	15: 8-12
GREENALL, A.F.	Recent developments in production of supplementary crops	8: 94-100
GREIG, D.M.	The marginal lands act	4: 69-77
GRIFFITHS, E.G.	Some aspects of the beef industry in Great Britain	7: 19-23
GRIGG, G.H.	The policy of the New Zealand Meat Producers' Board	1: 39-49

H

HADFIELD, W.V.	Crop rotations	11: 75-83
HAMILTON, W.M.	The organisation of agricultural research in New Zealand	8: 10-19
HARDY, C.S.	Intensive grassland farming compared with arable-cum-grassland	2: 35-38
HARRIS, P.B.	A fertilizer mixture for stimulating the growth of lucerne	14: 34-39
HART, D.S.	Improving the Southdown breed The story of the effect of "1" thyroxine on growth of wool in sheep	15: 66-70 6: 48-53
HARTLEY, W.J.	Recent advances in selenium and animal health Stock health: Progress report on white-muscle disease and ill thrift	10: 29-32 9: 79-80
HASLAM, D.A.R.	The profitability of irrigation in Canterbury	14: 79-95
HAUGHEY, K.G.	Stock health: Progress report on white-muscle disease and ill thrift	9: 63-65
HENDERSON, A.	Farmer experiences with a high per acre production Intensive grassland farming compared with arable-cum-grassland	5: 90-92 2: 38-42
HENDERSON, A.E.	Development of the fleece and efficiency in wool growth Out of season shearing with reference to wool quality Wool faults Wool prices as an indicator for flock improvement aims Wool: results of research and its application on the farm	8: 36-46 14: 43-49 5: 42-45 18: 33-40 10:110-115 20: 43-47
HENDERSON, G.B.	A case history of amalgamation	9: 55-58
HERCUS, C.B.	Stock health: Progress report on white-muscle disease and ill thrift	9: 25-30
HEWITT, W.R.R.	The electric fence and its erection	9: 25-30
HIGHT, G.K.	Stock breeding research at the Whatawhata hill-country research station	19: 48-62
HILGENDORF, C.	Diversification of meat markets	17: 17-23
HOLDERNESS, T.D.J.	Contour furrowing Gorse eradication on hill country	1: 92-94 14:104-106
HOLLARD, M.G.	Improved feeding of dairy cows The proper use of bulk feeds for dairy cows Variations in the solids-not-fat content of the milk of dairy cows	3: 49-56 8: 60-65 10: 21-25
HOLMES, G.A.	Cutting costs in farming: Establishment and management of pastures	9: 83-86
HOPKIRK, C.S.M.	Brucellosis in dairy herds Milk work in progress at Lincoln College	10: 26-28 12: 91-95
HORROBIN, W.	New Zealand Wool Board and its policy	5: 8-11
HUGHES, J.G.	Reducing the costs of run country fencing	13: 54-61
HULLETT, E.W.	The significance of moisture in wheat	9:115-121
HULSTON, D.J.	Aerial topdressing and seeding from the air	1: 32-39

HUMM, C.W. Flood irrigation on a North Canterbury farm	3: 56-58
HURST, A.C. The future of irrigation and its effect on sheep farming	1: 79-84
HYDE, J.A. Some aspects of international agriculture	9: 8-16

I

INGLIS, J.A.H. Farming methods for high labour output	17: 62-67
INKSTER, I.J. Sheep production	16: 41-45
IRVINE, C.H.G. Iodine deficiency and its effects	17:129-132
IVERSEN, C.E. Can Canterbury carry more stock?	1: 94-97
Developments in lucerne overseas and their possible application in New Zealand	5: 52-57
Lucerne: its potentiality and methods of achieving its potentiality	15: 78-83

J

JAMES, O.G. Agricultural aviation - now and the future	16: 12-19
JAMESON, N.R. The policy of the New Zealand Wool Board	1: 7-14
JESSEP, B.E. Increasing production in high country	15: 29-34
JOBLIN, A.D.H. Recent additions to our knowledge of intensive beef production	19: 67-74
JOHNS, A.T. Bloat	8: 20-25
Some factors affecting intake and production in ruminants	11:105-109
JOHNSON, R.M.D. Cattle on tussock country	3: 28-30
JOHNSON, R.W.M. Income and productivity in agriculture	17: 46-54
JOHNSTON, D.M. Principles of efficient pasture utilization	19: 84-85
JOHNSTONE, E.S. Bulk handling and storage of grain	9:124-126
JOLIFFE, W.H. The farm woodlot	4: 61-65

K

KELSEY, J.M. Control of pasture pests under the new regulations	14: 40-42
Developments in grass grub control	12: 25-26
Grass grub and porina on hill country	9: 34-36
KENNINGTON, B.J. Lucerne in the farm programme	5: 61-63
KERR, S. Weather forecasting as it affects farmers	4: 94-103
KHOURI, R.H. Early weaning of dairy calves	19: 43-47
KING, H.J. Finance for amalgamation	20: 35-42
KINGMA, O. The effect of price on the pig enterprise	18:128-130
KINGSBURY, M.F. Bulk handling and storage of grain	9:127-128
KIRTON, A.H. Confrontation and lamb carcass quality	18: 52-59
Lean meat production	15: 71-77

L

LAMMERINK, J. Peppermint as a new crop	19: 35-37
LANGER, R.H.M. Wheat production	16: 46-51
LAW, N.H. Trends affecting production and quality standards	11: 26-33
LAWLOR, M.D. Intensive sheep farming under conditions of adequate rainfall in West Otago	20: 80-83
LAWSON, B.M. Copper deficiency disease in animals	17:125-128
The quality of lucerne pasture for lamb production	15: 88-92
LEITCH, C.C. Can Canterbury carry more sheep?	1: 98-100
LEONARD, W.F. Barley grass control	15:112-114
New weedkillers for arable farms	14:107-112
LEVY, E.B. The future of grassland farming in New Zealand	7: 7-13
LINDSAY, G.G. A survey of machinery and methods for fodder conservation	10:132-153
LISTER, S.J. Irrigation: farmer's experiences	6: 96-99
LITTLE, J.R. Constitutional vigour in domestic livestock	10: 57-67
LOBB, W.R. A fertilizer mixture for stimulating the growth of lucerne	14: 34-39
New developments in irrigation techniques	14: 96-103

LOBB, W.R.	Some results of fertiliser trials and their implication on the more efficient use of fertilisers	9: 87-96
LOW, A.R.	Capital for farm development	15: 13-16
LOWE, A.D.	Aphids and virus Insect pests of brassicas	12: 45-48 8: 111-120

M

McALISTER, J.A.	The financial side of passing assets to your family	16: 108-117
McARTHUR, A.T.G.	Method study The retention and motivation of farm labour	17: 75-83 14: 155-162
McCASKILL, L.W.	The financing of houses for farm labour and a description of existing community farm-labour schemes	3: 88-97
McDOUGALL, J.D.	Running a large-scale farm	20: 60-65
McEWEN, G.H.	Taxation and the growth of the farm business	20: 48-59
MACFARLANE, A.A.	Aerial farming in the South Island: farmer's experiences	7: 62-64
McFARLANE, D.	Fertility in beef cattle	7: 36-41
McFAULL, J.J.	The wool commission and wool price fluctuations	17: 6-16
McGREGOR, J.N.	Aerial farming in the South Island: farmer's experiences	7: 55-59
McKellar, T.A.	Taxation and its effect on production from the farmer's point of view	2: 61-65
MackENZIE, C.N.	Farmer's experiences with beef cattle	7: 42-44
McKENZIE, D.K.	Water supply for stock in the Ashburton county	9: 49-52
McLEAN, J.W.	Drugs for the control of internal parasites in sheep Infertility in rams Present knowledge of the disease (foot-rot) The quality of lucerne pasture for lamb production Recent advances in ill-thrift Stock health: Progress report on white-muscle disease and ill thrift	12: 33-37 6: 37-41 4: 11-14 15: 88-92 8: 148-157 9: 68-79
McLELLAN, C.H.	Westland farming: The development of a West Coast dairy farm	13: 36-39
McLEOD, C.C.	Fertilisers on cereals	12: 38-44
McLEOD, D.	Grass grub and porina on hill country Maintenance of stock numbers on hill country and the supply of surplus stock	9: 33-34 1: 14-20
McMEEKAN, C.P.	The future of pedigree breeding The work of the Ruakura Animal Research Station	10: 42-50 6: 18-29
McPHERSON, G.K.	Dairying under irrigation at Winchmore experimental dairy farm The sheep farm on the experimental area of the Winchmore irrigation farm	3: 58-63 5: 104-108
McQUEEN, A.E.	The farmer and transport in New Zealand	19: 6-15
McSWEENEY, D.B.	Rural secondary education in New Zealand Secondary education (panel discussion)	13: 128-133 13: 134-143
MATTHEWS, L.J.	Pasture establishment with the aid of chemical weedkillers	8: 101-105
MELVILLE, J.	Recent advances in grassland farming as they affect hill country	3: 7-16
MENZIES, I.	Grass grub and porina on hill country	9: 31-32
MITCHELL, K.J.	Technical potentialities of New Zealand farming	20: 72-79
MONTEATH, M.A.	Costs and benefits of increased stocking in West Otago	15: 35-42
MONTGOMERIE, A.W.	The viewpoint of the pedigree breeder	10: 51-56
MORRIS, J.L.	A comparison of chemical and cultivation methods of crop and pasture establishment The labour position on the farm	19: 122-125 17: 55-61
MORRIS, L.	Stock health: Progress report on white-muscle disease and ill thrift	9: 53-55
MORRISON, P.G.	A mixed farm at Sheffield	11: 84-88
MULHOLLAND, A.L.	Bulk handling and storage of grain	9: 122-124

- MULHOLLAND, W.W. Wheat and arable farming: (3) Wheat in New Zealand farming 2: 29-34
 MURPHY, S.J. Markets for New Zealand dairy produce 14:150-154

N

- NATUSCH, G.G. The use of the Mackenzie Country for producing power 16: 58-70

O

- O'CONNOR, K.F. The farming future of the high country 20:134-139
 Production in the mountains 10: 82-94
 A scientific basis for potential use of land in the Mackenzie 16: 77-87
- OLIVER, W.R. The development of two fat-lamb farms 3:117-126
- ORMOND, J. Meat marketing 11: 7-15
- OSBORNE, G.O. Recent advances in research on insect attractants 19: 38-42
- O'SHEA, A.P. New Zealand farming: Some recollections and some reflections 10: 8-15

P

- PALMER, B.H. Farmer experiences with a high per acre production 5: 96-103
- PERYMAN, N.M. How to alleviate the high cost of dying 2: 66-81
- PHILLIPS, D.S.M. The effect of some milking management factors on total production 12: 79-84
- PHILPOTT, B.P. Economic research on fat lamb prices 11: 16-25
 Meat marketing symposium 12: 12-24
 Overseas trends affecting New Zealand agriculture 18: 97-110
 The value of statistics to the wool industry 5: 16-23
- PILBROW, C.A.B. Farmer experiences with a high per acre production 5: 92-96

Q

- QUARTERMAIN, A. Boar performance testing 19:139-142

R

- RAE, A.L. The improvement of sheep by selection 14: 57-64
- RANKIN, D.E. Increasing production on light land 15: 43-47
- REEVES, S.D. Beef on the plains 17: 97-103
- REYNOLDS, D.G. Farming in the Mackenzie - present production, trends and practical possibilities 16: 71-76
- RIDDOLLS, A.W. Farm water supply 9: 39-48
 Irrigation: Methods of application 6: 86-91
- ROBERTS, J.E.D. Farmer's experiences with beef cattle 7: 49-52
- ROBERTS, N.F. The wool research organisation of New Zealand (Inc) 14: 65-71
- ROBERTSON, R.M. Lucerne in the farm programme 5: 72-75
- ROBINSON, A.C.R. Passing management responsibility on to the younger generation 16:103-107
- ROSS, D.A. Trends in the use of wool in manufacturing 18: 41-44
- ROWLANDS, T.E. The needs of my district and a plan to satisfy them 3: 77-82
- ROWLEY, W.J. Irrigation: farmer's experiences 6: 95-96
- ROWNTREE, N.A. Review of current farm taxation 2: 46-53
- RYDE, D.G. Labour-saving devices for sprinkler irrigation farming 20: 91-107

S

- SCAIFE, A. Some experiences in tussock grassland development and management 13: 46-53

SCHERP, E. Aerial farming in the South Island: farmer's experiences	7: 65-68
SCOTT, J.D.J. Stocking rates on Canterbury sheep farms	13: 40-45
SCOTT, R.H. Survey of beef production in the South Island	7: 27-35
SEARS, P.D. High production pasture in relation to animal thrift	11: 89-95
The management of high-producing pastures	5: 80-89
SHEARER, I.J. Grain feeding of the sow	18: 139-144
SHEPHERD, A. The meal-based pig producer and the future	18: 122-124
SHERRIFF, L.A.P. Overseas market promotion for New Zealand meat	15: 105-111
SIDEY, H.C.A. The improvement of front hill-country in Canterbury	10: 68-70
SIEVWRIGHT, H. Aerial farming in the South Island: some aspects of aerial top-dressing and seeding in the tussock country from the Waitaki to the Rakaia rivers	7: 70-78
SIM, A.H. Cattle on the plains	3: 16-23
SIMPSON, W.S. Flameproofing of wool	19: 33-34
SLATER, G.S. Cropping and its effect on soil fertility	2: 16-20
SMALLFIELD, P.W. Diversification of farming	9: 102-107
SMETHAM, M.L. Varieties of subterranean clover	19: 28-32
SMITH, E.G. Supplementary crops for maximum returns	8: 85-90
SMITH, H.B. Changes which could reduce shipping cost increases	19: 16-27
SMITH, H.C. Dry-rot investigations	8: 106-110
Spraying for control of yellow dwarf virus in wheat	13: 102-109
SMITH, R.H. Recent developments in mixed cropping	16: 20-27
SOUTHCOTT, W.H. Pizzle rot and its treatment	15: 55-59
STAFFORD, W.C. The future of irrigation and its effect on sheep farming	1: 84-88
The use of fertility	9: 97-101
STEEL, J.L. Farm development in South Canterbury	14: 25-28
STEVENS, P.G. The factual position regarding lambing percentages - past and present	3: 98-108
STEWART, J.D. Adjusting farms to economic change	20: 21-28
Financial problems of development under fluctuating prices	17: 28-40
Management considerations in farming lucerne on low-rainfall light land	15: 93-99
Planning for profit	13: 14-19
The profitability of irrigation in Canterbury	14: 79-95
STICHBURY, J.W. Artificial breeding for town milk herds	19: 75-80
Artificial breeding in New Zealand and overseas	12: 85-90
Herd improvement	8: 66-71
Increasing production per cow through breeding	3: 43-49
STRUTHERS, A.B. Taxation and its effect on production	2: 53-60
STUART, R.C. The economics of mixed arable farming in Canterbury	11: 65-74
SYMONS, L. The optimum use of land	16: 52-57

T

TAYLOR, A.R. Labour-saving devices for sprinkler irrigation farming	20: 91-107
TAYLOR, N.W. Management considerations in farming lucerne on low-rainfall light land	15: 93-99
TAYLOR, R. Chemicals for cultivation	19: 113-121
THACKER, J.E. Cattle on Banks Peninsula	3: 30-33
THIELE, G.F. Costs and returns of horticultural crops	18: 67-76
THOMAS, P.L. Developments in dipping materials	12: 27-32
THOMSON, G.G. Anatomy of the sheep's foot	4: 9-11
Copper deficiency disease in animals	17: 125-128
Progress report on ill-thrift	10: 33-41
The quality of lucerne pasture for lamb production	15: 88-92
Some causes of infertility in cattle	8: 72-76
TOCKER, H.H. Survey of beef production in the South Island	7: 27-35
TOMLIN, D.G. Making use of marginal lands finance for development	14: 20-24
TOPP, E. Improvements of lambing percentages	1: 75-79
TOPP, E.C. Lucerne in practice	15: 100-104

TOPP, E.C. Lucerne in the farm programme	5: 66-70
TRIPP, C.W.H. Cattle in Southland	3: 33-36
TROLOVE, B.H. Cattle in Marlborough and Nelson	3: 36-40
TROTTER, W.B. Problems of lamb fattening	1: 61-67
TURTON, M. Cattle on the foothills	3: 23-27
Farming overseas	6:107-108
Problems of lamb fattening	1: 56-61
TYRER, T.G. Self-feeding of silage in Britain	10: 16-20

U

UROUHART, A.A. The production of wool: A. Merino	5: 23-26
--	----------

V

VINE, R. Cross-bred beef production	16: 35-40
VLIEG, P. Bloat control methods	19: 81-83
VOGTHERR, L. The implications of the recent changes in the meat schedule	17: 24-27

W

WALKER, S.D. Stocking rates on Canterbury sheep farms	13: 40-45
WALKER, T.W. Farming in Britain	11: 55-64
Nitrogen fertilisers in Canterbury	19: 99-104
Soils in relation to animal health	8:142-147
Water deficiency	6: 63-69
WALLACE, L.R. Ruakura experiments on sheep fertility	12: 54-63
The use of hormones to control the time of lambing and the lambing percentage	6: 30-36
WALSH, J.M. Lucerne in the farm programme	5: 63-66
WARD, F.L. The pattern of wool production in New Zealand	5: 46-50
WATSON, D. Light land development	12:112-117
WATSON, N. Principles of buying and selling	13: 20-26
WEBB, D.N.R. Future of large scale farming in New Zealand	18: 6-10
WEIR, C.W. How I got into sheep farming	16: 94-98
WENDLEKEN, W.T. The effects of shelter belts on wind flow and some aspects of the shelter received	4: 55-59
WESTON, I.W. Farm taxation: theory and practice	2: 43-46
WESTON-MACPHERSON, I. How I became a dairy farmer	16: 99-102
WHALEN, W.J. Aerial farming in the South Island: farmer's experiences	7: 59-62
WHEELER, A.L. Sheep fertility - a breeder's point of view	12: 64-67
WHITE, J.G.H. Possibilities in frozen peas and beans	18: 90-96
Problems in establishment of lucerne	15: 84-87
WHITTEN, L.K. External parasites of sheep	11: 50-51
WHITTLESTONE, W.G. Recent developments in milking machine cleaning	14:137-143
WILKIE, D.R. Contour furrowing	1: 88-91
WILLIAMS, G.V. How to avoid accidents on the farm	18: 86-89
WILLIAMS, O.G. The national agricultural advisory service	14:113-122
WILSON, W.D. Prevention of mental health problems	18: 11-16
WOODS, N.S. Farm manpower	15: 17-22
WRIGHT, A.C. Meat marketing symposium	12: 12-24
The use of concentrates as supplementary feed	8: 91-93

SUBJECT INDEX

A

ACCIDENTS

- WILLIAMS, G.V. How to avoid accidents on the farm 18: 86

AERIAL TOPDRESSING AND FARMING

- HULSTON, D.J. Aerial topdressing and seeding from the air 1: 32
JAMES, O.G. Agricultural aviation - now and the future 16: 12
MACFARLANE, A.A. Aerial farming in the South Island: farmer's experiences 7: 62
MCGREGOR, J.N. Aerial farming in the South Island: farmer's experiences 7: 55
SCHERP, E. Aerial farming in the South Island: farmer's experiences 7: 65
SIEVWRIGHT, H. Aerial farming in the South Island: some aspects of aerial topdressing and seeding in the tussock country from the Waitaki to the Rakaia rivers 7: 70
WHALEN, W.J. Aerial farming in the South Island: farmer's experiences 7: 59

AGRICULTURE OVERSEAS

- CALDER, J.W. Developments in British farming 14:123
CLELAND, G.R. Farming trends in America 19:129
COPLAND, H.E. Farming overseas 6:105
GRIFFITHS, E.G. Some aspects of the beef industry in Great Britain 7: 19
HYDE, J.A. Some aspects of international agriculture 9: 8
TURTON, M. Farming overseas 6:107
TYRER, T.G. Self-feeding of silage in Britain 10: 16
WALKER, T.W. Farming in Britain 11: 55
WILLIAMS, O.G. The national agricultural advisory service 14:113

ANIMAL BREEDING

- CARTER, A.H. The potential for increased farm efficiency from exotic breeds of sheep and cattle 20:108
HIGHT, G.K. Stock breeding research at the Whatawhata hill-country research station 19: 48
MONTGOMERIE, A.W. The viewpoint of the pedigree breeder 10: 51
STICHBURY, J.W. Artificial breeding for town milk herds 19: 75
Artificial breeding in New Zealand and overseas 12: 85
Increasing production per cow through breeding 3: 43

ANIMAL HEALTH

- ANDREWS, E.D. Selenium responsive diseases 17:119
BROOKBANKS, E.O. Observations on a mastitis survey in the Waikato 14:144
BUTLER, G.W. Some aspects of chemical composition (of plants) in relation to animal health 11: 96
CRAWFORD, R. The fertility of ewes and rams with special reference to diseases affecting their fertility 3:108
CUNNINGHAM, I.J. Recent knowledge of trace elements and animal health 8:158
HOPKIRK, C.S.M. Brucellosis in dairy herds 10: 26
IRVINE, C.H.G. Iodine deficiency and its effects 17:129
JOHNS, A.T. Bloat 8: 20
LITTLE, J.R. Constitutional vigour in domestic livestock 10: 57
MCLEAN, J.W. Infertility in rams 6: 37
THOMSON, G.G. Some causes of infertility in cattle 8: 72
THOMSON, G.G. and B.M. LAWSON Copper deficiency disease in animals 17:125

VLIEG, P. Bloat control methods	19: 81
WALKER, T.W. Soils in relation to animal health	8:142

B

BEEF BREEDING AND PRODUCTION

ACLAND, J. Farmer's experiences with beef cattle	7: 44
ACLAND, J.O. A critical look at the place of beef cattle on hill country	17: 93
BAKER, A.B. Policy of the N.Z. Meat Producers' Board on beef production in the South Island	7: 14
BARTON, R.A. Aims of beef cattle selection and methods of achieving these aims	14: 72
CANDY, R.A. Beef from the dairy herd	17:145
CHISHOLM, M.M. The production and management of beef cattle on Molesworth for the store market	10: 95
EVERITT, G.C. Recent developments in beef production	17: 84
FALCONER, P.M. Beef cattle on Canterbury plainsland farms	11: 40
FIELDEN, E.D. Increasing the annual calf crop	10:103
GERRING, J.C. Producing beef from dairy herds	13: 92
JOBLIN, A.D.H. Recent additions to our knowledge of intensive beef production	19: 67
JOHNSON, R.M.D. Cattle on tussock country	3: 28
McFARLANE, D. Fertility in beef cattle	7: 36
MacKENZIE, C.N. Farmer's experiences with beef cattle	7: 42
REEVES, S.D. Beef on the plains	17: 97
ROBERTS, J.E.D. Farmer's experiences with beef cattle	7: 49
SCOTT, R.H. and H.H. TOCKER Survey of beef production in the South Island	7: 27
SIM, A.H. Cattle on the plains	3: 16
THACKER, J.E. Cattle on Banks Peninsula	3: 30
TRIPP, C.W.H. Cattle in Southland	3: 33
TROLOVE, B.H. Cattle in Marlborough and Nelson	3: 36
TURTON, M. Cattle on the foothills	3: 23
VINE, R. Cross-bred beef production	16: 35

C

CROPS

BLAIR, I.D. Turnip mosaic	8:121
DUNN, J.S. Seed bed mechanisation for efficient crop production	19:126
FLAY, A.H. Cropping and its effect on soil fertility	2: 7
GARRETT, H.E. Forage crops and farm management	8: 77
GREENALL, A.F. Recent developments in production of supplementary crops	8: 94
HADFIELD, W.V. Crop rotations	11: 75
LAMMERINK, J. Peppermint as a new crop	19: 35
MITCHELL, K.J. Technical potentialities of New Zealand farming	20: 72
SLATER, G.S. Cropping and its effect on soil fertility	2: 16
SMITH, E.G. Supplementary crops for maximum returns	8: 85
SMITH, H.C. Dry-rot investigations	8:106
SMITH, R.H. Recent developments in mixed cropping	16: 20
STUART, R.C. The economics of mixed arable farming in Canterbury	11: 65

D

DAIRY FARMING

ALDRIDGE, G. Streamlining dairy farming	14:131
BARGH, C.V. The establishment of a 700-cow dairy farm	18: 17
BOTTING, D.J. Facing up to the financial problems of dairy farm development	17:139
CAMPBELL, I.L. Overseas research in milk production	12: 73
CLARK, R.W. High stocking rates can be achieved in the South Island	17:133
CLIFFORD, H.J. A revolution in dairy farming	16: 28
HOLLARD, M.G. Improved feeding of dairy cows	3: 49

HOLLARD, M.G.	The proper use of bulk feeds for dairy cows	8: 60
	Variations in the solids-not-fat content of the milk of dairy cows	10: 21
HOPKIRK, C.S.M.	Milk work in progress at Lincoln College	12: 91
KHOURI, R.H.	Early weaning of dairy calves	19: 43
MCLELLAN, C.H.	Westland farming: The development of a West Coast dairy farm	13: 36
McMEEKAN, C.P.	The future of pedigree breeding	10: 42
McPHERSON, G.K.	Dairying under irrigation at Winchmore experimental dairy farm	3: 58
PHILLIPS, D.S.M.	The effect of some milking management factors on total production	12: 79
STICHBURY, J.W.	Herd improvement	8: 66
WESTON-MACPHERSON, I.	How I became a dairy farmer	16: 99
WHITTLESTONE, W.G.	Recent developments in milking machine cleaning	14:137

DIVERSIFICATION

FRENLEY, G.A.G.	Dairy specialisation versus diversification	17:152
SMALLFIELD, P.W.	Diversification of farming	9:102

E

ECONOMIC CONDITIONS

BATTERSBY, G.B.	The monetary and economic council's view of the economy	18:117
CASTLE, L.	The politics and economics of New Zealand trade	13: 6
CORNWELL, J.	New Zealand farming in the 1970's and the Common Market	20: 6
FAWCETT, E.J.	Population: potential production and marketing prospects	6: 8
GREEN, W.A.E.	Linking livestock numbers to living standards	15: 8
JOHNSON, R.W.M.	Income and productivity in agriculture	17: 46
O'SHEA, A.P.	New Zealand farming: Some recollections and some reflections	10: 8
PHILPOTT, B.P.	Overseas trends affecting New Zealand agriculture	18: 97

EDUCATION

McSWEENEY, D.B.	Rural secondary education in New Zealand	13:128
	Secondary education (panel discussion)	13:134

F

FARM FORESTRY

COONEY, E.A.	Farm forestry: Utilisation and financial returns	11:119
GRAYBURN, A.W.	Farm forestry: Species for various sites and purposes	11:110

FEED AND FEEDING

BAKER, G.	Mechanisation and use of silage on a South Canterbury farm	2: 89
BOWMAR, S.C.	Fodder crops and their utilisation	2: 94
COOP, I.E.	Nutritional aspects of fodder conservation	10:127
COPLAND, H.M.	Dry land farming and the feed supply	2:105
DILLON, P.L.	Dry land farming and the feed supply	2: 99
DUNCAN, J.R.	Experiences with a feeding shed	13: 88
GARRETT, H.E.	Planning the feeding programme	2:109
JOHNS, A.T.	Some factors affecting intake and production in ruminants	11:105
LINDSAY, G.G.	A survey of machinery and methods for fodder conservation	10:132
WRIGHT, A.C.	The use of concentrates as supplementary feed	8: 91

FENCES

HEWITT, W.R.R. The electric fence and its erection	9: 25
HUGHES, J.G. Reducing the costs of run country fencing	13: 54

FERTILISERS AND FERTILITY

LOBB, W.R. Some results of fertiliser trials and their implication on the more efficient use of fertilisers	9: 87
MCLEOD, C.C. Fertilisers on cereals	12: 38
STAFFORD, W.C. The use of fertility	9: 97
TAYLOR, R. Chemicals for cultivation	19:113
WALKER, T.W. Nitrogen fertilisers in Canterbury	19: 99

FINANCE

CRAWFORD, J.M. Stock firm credit and farm budgets	17: 41
FLAY, A.H. et al Sources of credit (panel discussion)	12: 96
GREIG, D.M. The marginal lands act	4: 69
KING, H.J. Finance for amalgamation	20: 35
LOW, A.R. Capital for farm development	15: 13
STEWART, J.D. Financial problems of development under fluctuating prices	17: 28
TOMLIN, D.G. Making use of marginal lands finance for development	14: 20

G

GARDENING AND THE LANDSCAPE

CHALLENGER, S. Labour-saving gardens	12:120
The making and maintenance of a beautiful landscape	19:105

H

HARVESTING AND STORAGE OF GRAIN

CROSBIE, C.J. Bulk handling and storage of grain	9:128
Bulk harvesting storage and drying	13:110
EVANS, H.R. Bulk handling and storage of grain	9:136
GARRETT, H.E. et al Bulk harvesting (panel discussion)	13:123
GILLANDERS, B.R. Experiences with bulk harvesting and storage	13:120
JOHNSTONE, E.S. Bulk handling and storage of grain	9:124
KINGSBURY, M.F. Bulk handling and storage of grain	9:127
MULHOLLAND, A.L. Bulk handling and storage of grain	9:122

I

INSECT PESTS

KELSEY, J.M. Control of pasture pests under the new regulations	14: 40
Developments in grass grub control	12: 25
LOWE, A.D. Aphids and virus	12: 45
Insect pests of brassicas	8:111
OSBORNE, G.O. Recent advances in research on insect attractants	19: 38

IRRIGATION

BULLEID, J.B. Spray irrigation in North Otago	3: 64
COCKS, J.R. Irrigation for intensifying mixed crop farming	18: 77
COLLINS, B.W. Underground water supplies for irrigation	6: 70
FAIRHALL, J.E. Irrigation: farmer's experiences	6: 99
GERRARD, I.A. Irrigation: farmer's experiences	6: 92
HUMM, C.W. Flood irrigation on a North Canterbury farm	3: 56
HURST, A.C. The future of irrigation and its effect on sheep farming	1: 79
LISTER, S.J. Irrigation: farmer's experiences	6: 96
LOBB, W.R. New developments in irrigation techniques	14: 96
RIDDOLLS, A.W. Irrigation: Methods of application	6: 86

CASELBERG, H.M.	How to get into farming	16: 88
CROTHALL, E.A.	Problems in a growing business and their solution	18: 21
FAITHFUL, W.	The management of high-fertility farms	10:116
PLAY, A.H.	Budgeting for the farmer	10:154
FRENGLEY, G.A.G.	Out of season shearing with reference to farm management	14: 50
HENDERSON, G.B.	A case history of amalgamation	20: 43
McDOUGALL, J.D.	Running a large-scale farm	20: 60
MONTEATH, M.A.	Costs and benefits of increased stocking in West Otago	15: 35
MORRIS, J.L.	A comparison of chemical and cultivation methods of crop and pasture establishment	19:122
RANKIN, D.E.	Increasing production on light land	15: 43
ROBINSON, A.C.R.	Passing management responsibility on to the younger generation	16:103
STEEL, J.L.	Farm development in South Canterbury	14: 25
STEWART, J.D.	Adjusting farms to economic change	20: 21
	Planning for profit	13: 14
SYMONS, L.	The optimum use of land	16: 52
WATSON, D.	Light land development	12:112
WATSON, N.	Principles of buying and selling	13: 20

MARKETING

GRIGG, G.H.	The policy of the New Zealand Meat Producer's Board	1: 39
HILGENDORF, C.	Diversification of meat markets	17: 17
LAW, N.H.	Trends affecting production and quality standards	11: 26
MURPHY, S.J.	Markets for New Zealand dairy produce	14:150
ORMOND, J.	Meat marketing	11: 7
PHILPOTT, B.P., L.A. CAMERON and A.C. WRIGHT	Meat marketing symposium	12: 12
SHERRIFF, L.A.P.	Overseas market promotion for New Zealand meat	15:105
VOGTHERR, L.	The implications of the recent changes in the meat schedule	17: 24

MEAT PRODUCTION

BAKER, D.G.	Meat production on the farm	11: 34
KIRTON, A.H.	Lean meat production	15: 71

MENTAL HEALTH

WILSON, W.D.	Prevention of mental health problems	18: 11
--------------	--------------------------------------	--------

P

PASTURES

BARCLAY, P.C.	Progress in the development of new pasture species and varieties	14: 29
BUTLER, G.W.	Pasture composition and its relation to animal thrift	8:135
CALDER, J.W.	Pasture research at Ashley Dene	6: 54
CLIFFORD, H.J.	Some methods of avoiding treading damage to pastures	13: 82
CORKILL, L.	Pasture-plant improvement	8:129
DAVIES, J.D.G.	Canterbury dairy farm pasture species: their management and renovation	15:115
EDMOND, D.B.	Animal treading and pastures	13: 77
HARDY, C.S.	Intensive grassland farming compared with arable-cum-grassland	2: 35
HENDERSON, A.	Intensive grassland farming compared with arable-cum-grassland	2: 38
HOLMES, G.A.	Cutting costs in farming: Establishment and management of pastures	9: 83
JOHNSTON, D.M.	Principles of efficient pasture utilization	19: 84
LEVY, E.B.	The future of grassland farming in New Zealand	7: 7

MATTHEWS, L.J.	Pasture establishment with the aid of chemical weedkillers	8:101
SEARS, P.D.	High production pasture in relation to animal thrift The management of high-producing pastures	11: 89 5: 80
SMETHAM, M.L.	Varieties of subterranean clover	19: 28

PIGS

ADAM, J.L.	Sources of profit and loss with meal fed pigs	17:159
ADAMS, J.L. and I.J. SHEARER	Grain feeding of the sow	18:139
BAKER, J.	Economic pointers to grain-feeding pigs in New Zealand	18:134
DAVENPORT, P.G.	Disease prevention in the piggery	18:125
DUNKIN, A.C.	The relative values of fishmeal and meatmeal for growing pigs	18:131
KINGMA, O.	The effect of price on the pig enterprise	18:128
QUARTERMAIN, A.	Boar performance testing	19:139
SHEPHERD, A.	The meal-based pig producer and the future	18:122

PROCESS CROPPING

BALLINGER, R.	Export potentiality of seeds	18: 60
BRANDENBURG, W.	Processing crops with a future in Canterbury	19: 86
DAWSON, M.D.	The processed vegetable industry in Oregon and its relevance to New Zealand	18:111
DRIVER, C.M.	Possibilities and problems in growing potatoes for processing	19: 91
THIELE, G.F.	Costs and returns of horticultural crops	18: 67
WHITE, J.G.H.	Possibilities in frozen peas and beans	18: 90

R

RESEARCH

BAUMGART, I.L.	Development of research for agriculture	16: 6
HAMILTON, W.M.	The organisation of agricultural research in New Zealand	8: 10
McMEEKAN, C.P.	The work of the Ruakura Animal Research Station	6: 18

S

SHEEP FARMING

CAMERON, B.K.	Intensification on light land in Canterbury	20: 84
CLARKE, E.A.	Some recent developments in sheep management on North Island hill country	9: 17
COOP, I.E.	Seasonal productivity and stock feed requirements	2: 82
COWIN, P.J.	Breeds for hill-country: B. Cheviot	1: 27
DAWSON, A.R. and W.R. OLIVER	The development of two fat-lamb farms	3:117
ENSOR, P.C.	Breeds for hill country: A. Corriedale	1: 21
HENDERSON, A.	Farmer experiences with a high per acre production	5: 90
INKSTER, I.J.	Sheep production	16: 41
IVERSEN, C.E.	Can Canterbury carry more stock?	1: 94
LAWLOR, M.D.	Intensive sheep farming under conditions of adequate rainfall in West Otago	20: 80
LEITCH, C.C.	Can Canterbury carry more sheep?	1: 98
MCLEOD, D.	Maintenance of stock numbers on hill country and the supply of surplus stock	1: 14
McPHERSON, G.K.	The sheep farm on the experimental area of the Winchmore irrigation farm	5:104
PALMER, B.H.	Farmer experiences with a high per acre production	5: 96
PHILPOTT, B.P.	Economic research on fat lamb prices	11: 16
PILBROW, C.A.B.	Farmer experiences with a high per acre production	5: 92
SCOTT, J.D.J. and S.D. WALKER	Stocking rates on Canterbury sheep farms	13: 40
TROTTER, W.B.	Problems of lamb fattening	1: 61
TURTON, M.	Problems of lamb fattening	1: 56
WEIR, C.W.	How I got into sheep farming	16: 94

SHEEP BREEDING

CLARKE, E.A.	Progress in flock recording	18: 25
COOP, I.E.	Experiments on sheep fertility at Lincoln College	12: 49
	Face cover in sheep	6: 42
	Fat-lamb sires	1: 49
	Synchronized lambing	15: 60
DUNLOP, W.N.	Reasons for the rules governing the Coopworth	19: 63
GARRETT, H.E.	Lambing percentages on light land	12: 68
HART, D.S.	Improving the Southdown breed	15: 66
KIRTON, A.H.	Conformation and lamb carcass quality	18: 52
RAE, A.L.	The improvement of sheep by selection	14: 57
STEVENS, P.G.	The factual position regarding lambing percentages	
	- past and present	3: 98
TOPP, E.	Improvements of lambing percentages	1: 75
WALLACE, L.R.	The use of hormones to control the time of lambing	
	and the lambing percentage	6: 30
	Ruakura experiments on sheep fertility	12: 54
WHEELER, A.L.	Sheep fertility - a breeder's point of view	12: 64

SHEEP DISEASES AND PESTS

ALDERTON, D.	Footrot eradication	4: 18
ARMSTRONG, M.C.	Stock health: Progress report on white-muscle disease and ill thrift	9: 65
BRUERE, A.N.	Stock health: Progress report on white-muscle disease and ill thrift	9: 58
BRUNSDON, R.V.	A new look at drenching	17:104
BUDDLE, M.B.	Vaccination of lamb against infectious epididymitis	8:166
DOYLE, H.	External parasites of sheep	11: 52
FILMER, J.F.	Control of foot-rot in sheep	4: 14
	Recent developments in the control of diseases of sheep	1: 67
GRANT, A.B., C. DRAKE AND W.J. HARTLEY	Stock health: progress report on white-muscle disease and ill thrift	9: 79
HARTLEY, W.J., A.B. GRANT and C. DRAKE	Recent advances in selenium and animal health	10: 29
HAUGHEY, K.G.	Stock health: Progress report on white-muscle disease and ill thrift	9: 63
HERCUS, C.B.	Stock health: Progress report on white-muscle disease and ill thrift	9: 55
MCLEAN, J.W.	Drugs for the control of internal parasites in sheep	12: 33
	Present knowledge of the disease (foot-rot)	4: 11
	Recent advances in ill-thrift	8:148
	Stock health: Progress report on white-muscle disease and ill thrift	9: 68
MORRIS, L.	Stock health: Progress report on white-muscle disease and ill thrift	9: 53
SOUTHCOFF, W.H.	Pizzle rot and its treatment	15: 55
THOMAS, P.L.	Developments in dipping materials	12: 27
THOMSON, G.G.	Anatomy of the sheep's foot	4: 9
	Progress report on ill-thrift	10: 33
WHITTEN, L.K.	External parasites of sheep	11: 50

SOIL CONSERVATION

HOLDERNESS, T.D.J.	Contour furrowing	1: 92
WILKIE, D.R.	Contour furrowing	1: 88

SOIL TESTING

ADAMS, A.F.R.	Soil testing for major and trace elements	4: 34
BARTON, H.M.	Soil testing from a farmer's viewpoint	4: 45
CARR, H.M.	Soil testing from a farmer's viewpoint	4: 48

T

TAXATION

CANDLER, W.V. Incentives for increased output of farm products	14: 10
FIPPARD, N.B. Some thoughts on providing taxation and duties to ensure continuity of farming	10:158
FRASER, J.D. Taxation incentives	15: 23
MCALISTER, J.A. The financial side of passing assets to your family	16:108
MC EWEN, G.H. Taxation and the growth of the farm business	20: 48
MCKELLAR, T.A. Taxation and its effect on production from the farmer's point of view	2: 61
PERYMAN, N.M. How to alleviate the high cost of dying	2: 66
ROWNTREE, N.A. Review of current farm taxation	2: 46
STRUTHERS, A.B. Taxation and its effect on production	2: 53
WESTON, I.W. Farm taxation: theory and practice	2: 43

TRANSPORTATION

MCQUEEN, A.E. The farmer and transport in New Zealand	19: 6
SMITH, H.B. Changes which could reduce shipping cost increases	19: 16

TUSSOCK GRASSLAND

BURDON, G. The management of high country	10: 71
CHAPMAN, L.P. Some aspects of tussock country management	4: 77
CONNOR, H.E. Some aspects of the botany of tussock grasslands	10: 78
CRUMP, D.K. High-country development	20:130
DINGWALL, A.R. Weed control of South Island hill country	4: 84
ENSOR, P.C. Options open to high-country farmers	20:124
HOLDERNESS, T.D.J. Gorse eradication on hill country	14:104
JESSEP, B.E. Increasing production in high country	15: 29
KELSEY, J.M. Grass grub and porina on hill country	9: 34
MCLEOD, D. Grass grub and porina on hill country	9: 33
MELVILLE, J. Recent advances in grassland farming as they affect hill country	3: 7
MENZIES, I. Grass grub and porina on hill country	9: 31
NATUSCH, G.G. The use of the Mackenzie Country for producing power	16: 58
O'CONNOR, K.F. The farming future of the high country	20:134
A scientific basis for potential use of land in the Mackenzie	16: 77
Production in the mountains	10: 82
REYNOLDS, D.G. Farming in the Mackenzie - present production, trends and practical possibilities	16: 71
SCAIFE, A. Some experiences in tussock grassland development and management	13: 46
SIDEY, H.C.A. The improvement of front hill-country in Canterbury	10: 68

W

WATER SUPPLY

MCKENZIE, D.K. Water supply for stock in the Ashburton county	9: 49
RIDDOLES, A.W. Farm water supply	9: 39

WEATHER

KERR, S. Weather forecasting as it affects farmers	4: 94
--	-------

WEEDS

FLAY, A.H. et al Nassella tussock (panel discussion)	13: 62
LEONARD, W.F. Barley grass control	15:112
New weedkillers for arable farms	14:107

WHEAT

BLAIR, I.D.	Avoidable hazards in the growing of wheat	9:111
COPP, L.G.L.	Wheat varieties	9:108
	Wheat varieties	13: 97
DANKS, A.J.	Wheat and arable farming: (1) International aspects	2: 20
DUNSHEA, L.C.	Wheat and arable farming: (2) N.Z. production, requirements and marketing	2: 25
HULLETT, E.W.	The significance of moisture in wheat	9:115
LANGER, R.H.M.	Wheat production	16: 46
MULHOLLAND, W.W.	Wheat and arable farming: (3) Wheat in New Zealand farming	2: 29
SMITH, H.C.	Spraying for control of yellow dwarf virus in wheat	13:102

WINDBREAKS

DEANS, D.	Farm shelter	4: 59
JOLIFPE, W.H.	The farm woodlot	4: 61
WENDLEKEN, W.T.	The effects of shelter belts on wind flow and some aspects of the shelter received	4: 55

WOOL

BOYD-CLARK, J.	The wool trade	5: 11
CALLAGHAN, F.R.	The New Zealand Wool Board research plans and results to date	8: 26
FRASER, J.D.	The final report of the wool marketing study group	18: 45
HORROBIN, W.	New Zealand Wool Board and its policy	5: 8
JAMESON, N.R.	The policy of the New Zealand Wool Board	1: 7
McFAULL, J.J.	The wool commission and wool price fluctuations	17: 6
PHILPOTT, B.P.	The value of statistics to the wool industry	5: 16
ROBERTS, N.F.	The wool research organisation of New Zealand (Inc)	14: 65
ROSS, D.A.	Trends in the use of wool in manufacturing	18: 41
SIMPSON, W.S.	Flameproofing of wool	19: 33

WOOL PRODUCTION

ASKIN, G.T.	The production of wool: C. Corriedale	5: 33
BETHELL, C.H.	The production of wool: C. Corriedale	5: 28
CLARK, J.	The production of wool: D. Fat lamb flock	5: 36
CRAN, C.G.	The production of wool: B. Halfbred	5: 26
DUNCAN, J.E.	Moisture in wool	8: 47
HART, D.S.	The story of the effect of "1" thyroxine on growth of wool in sheep	6: 48
HENDERSON, A.E.	Development of the fleece and efficiency in wool growth	8: 36
	Out of season shearing with reference to wool quality	14: 43
	Wool: results of research and its application on the farm	10:110
	Wool faults	5: 42
	Wool prices as an indicator for flock improvement aims	18: 33
URQUHART, A.A.	The production of wool: A. Merino	5: 23
WARD, F.L.	The pattern of wool production in New Zealand	5: 46

